

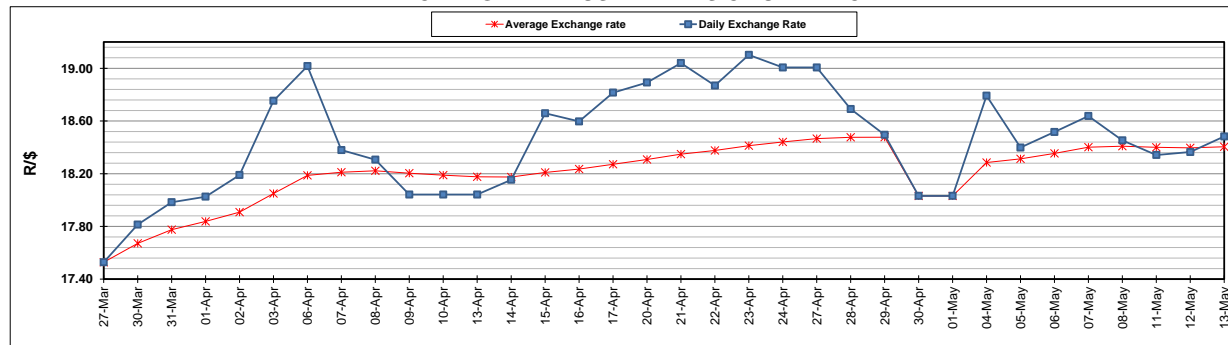
	PETROL 95 ULP	PETROL 93 ULP & LRP	DIESEL 0.05%	DIESEL 0.005%	ILL. PAR.
GAUTENG PUMP PRICE (SA c/l) AS FROM 06/05/2020	1,222.000	1,202.000	-	-	-
WHOLESALE PRICE (SA c/l) AS FROM 06/05/2020	-	-	1,108.560	1,117.960	449.828
SINGLE NATIONAL MAXIMUM RETAIL PRICE	-	-	-	-	543.000
BASIC FUEL PRICE - 13/05/2020 (SA c/l)	401.600	378.971	381.474	391.465	284.303
PRESS RELEASE CONTRIBUTION TO BFP 06/05/2020 - 13/05/2020 (SA c/l)	274.770	264.770	357.630	367.030	245.128
UNIT OVER/(UNDER) RECOVERY - 13/05/2020 (SA c/l)	(126.830)	(114.201)	(23.844)	(24.435)	(39.175)
AVERAGE BASIC FUEL PRICE 30/04/2020 - 13/05/2020	383.743	367.011	355.867	365.285	244.310
AVERAGE UNIT OVER/(UNDER) RECOVERY 30/04/2020 - 13/05/2020	(39.373)	(32.641)	66.163	64.145	90.018

ANALYSIS MOVEMENT OF AVERAGE OVER/(UNDER) RECOVERY

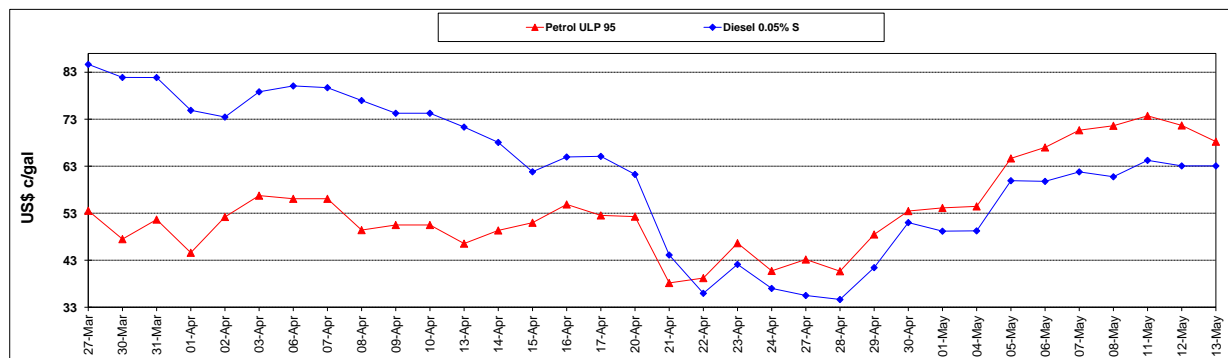
	PETROL 95	PETROL 93	DIESEL 0.05%	DIESEL 0.005%	ILL. PAR.
- MOVEMENT IN INTERNATIONAL PRODUCT PRICES	(40.876)	(34.079)	64.769	62.714	89.061
- MOVEMENT IN EXCHANGE RATE	1.503	1.438	1.394	1.431	0.957
AVERAGE UNIT OVER/(UNDER) RECOVERY 30/04/2020 - 13/05/2020	(39.373)	(32.641)	66.163	64.145	90.018

R/\$ EXCHANGE RATE - (R/\$18.4828 - 13/05/2020)

EXCHANGE RATE USED IN BASIC FUEL PRICE



INTERNATIONAL PRODUCT PRICES OF BASKET USED IN BASIC FUEL PRICE



BASIC FUEL PRICE IN SA CENTS PER LITRE

